

Growth Factors

Cytokines • Soluble Receptors

Monoclonal Antibodies

Polyclonal Antibodies

ELISA

Service Options:

- Production of recombinant proteins in E.coli and insect cells
- Purification of recombinant proteins and antibodies
- Reagent services: special formulation
- Bulk service
- Functional assays for growth factors and cytokines



Release 05/2020

orders@reliatech.de

ReliaTech

reliably yours

We are ISO 9001:2015 certified.

Your Partner in Life Science Research of
Angiogenesis and Lymphangiogenesis

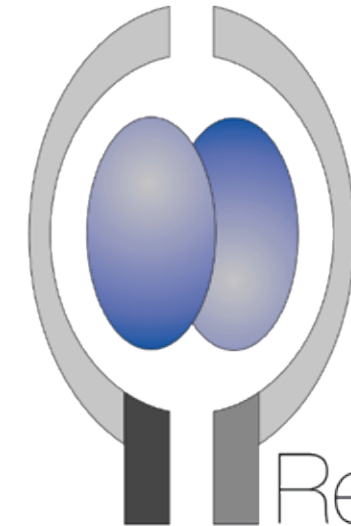
20 years of experience

Get in touch:

ReliaTech GmbH

Lindener Str. 15
38300 Wolfenbüttel
Germany

Phone: +49 (0) 5331 8586 987
Fax: +49 (0) 5331 8586 989
E-Mail: orders@reliatech.de



ReliaTech
Receptor Ligand Technologies GmbH

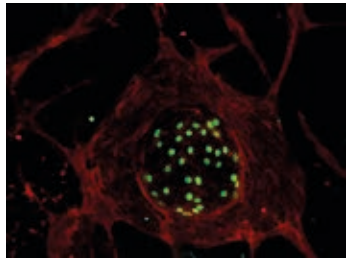
Lymphatic Endothelial
Cell Marker:
PROX-1

www.reliatech.de

Lymphatic Endothelial

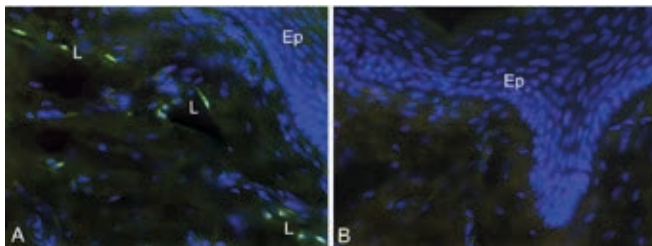
Prox-1 (homolog of the *Drosophila melanogaster* homeobox gene prospero) is a nuclear transcription factor, which plays a crucial role in the development of the lymphatic system. It is expressed by several cell types like liver cells and many stem cells, but in the vascular compartment it is largely specific for lymphatic endothelial cells, although it can be found in some specialized subpopulations of endothelial cells, e.g. in the venous and the cardiac valves. Prox-1 is the key transcription factor for the early steps of LEC differentiation from the embryonic veins and remains required for lymphatic identity. Prox-1 is a master control gene introducing the expression of other lymphatic markers including the upregulation of the VEGFR-3.

Rabbit anti-human Prox-1 [Cat# 102-PA32]



Immunofluorescence staining of human CD31 (red) and Prox-1 (green) in freshly isolated human microvascular endothelial cells from skin using a monoclonal mouse anti-human CD31 antibody [Cat# 101-M92] and a polyclonal rabbit anti-human Prox-1 antibody [Cat# 102-PA32].

Rabbit anti-human Prox-1 [Cat# 102-PA32AG]



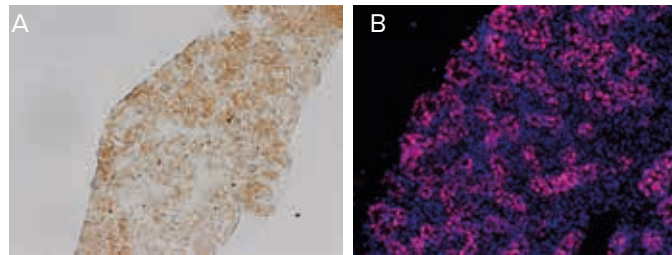
Immunofluorescence staining of cryosections of human foreskin (fixed 15 min in 4% PFA) with anti-human Prox-1 (green) [Cat# 102-PA32AG] and counter staining of nuclei with DAPI.

A) Note the specific green Prox-1 signal in the nuclei of lymphatics (L). Ep, epidermis. Specimen provided by Prof. Dr. J. Wilting, Göttingen.

The experiment was performed by the research group of Prof. Dr. J. Wilting and Dr. K. Buttler, University Göttingen, Germany.

Cell Marker

Rabbit anti-human Prox-1 [Cat# 102-PA32AG]



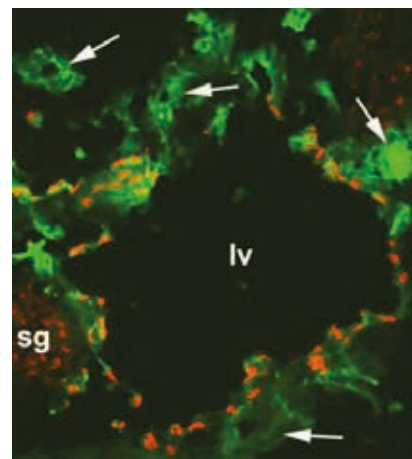
Immunohistochemistry (A) and Immunofluorescence (B) staining of E15 chick pancreas tissue using ReliaTech's polyclonal rabbit anti-human Prox-1 antibody [Cat# 102-PA32AG].

The experiments were performed by Andreia Margarido, de Santa Barbara's team, INSERM U1046, Montpellier, France.

Rabbit anti-human Prox-1 antibodies by ReliaTech GmbH

Cat#	Size	Antibody	Application
102-PA32S	100 µg	Protein-A purified	WB, IHC, IF
102-PA32	200 µg	Protein-A purified	WB, IHC, IF
102-PA32AG	50 µg	Antigen affinity purified	WB, IHC, IF
102-PABi32	50 µg	Biotin-conjugated	IF

Rabbit anti-human Prox-1 [Cat# 102-PA32]

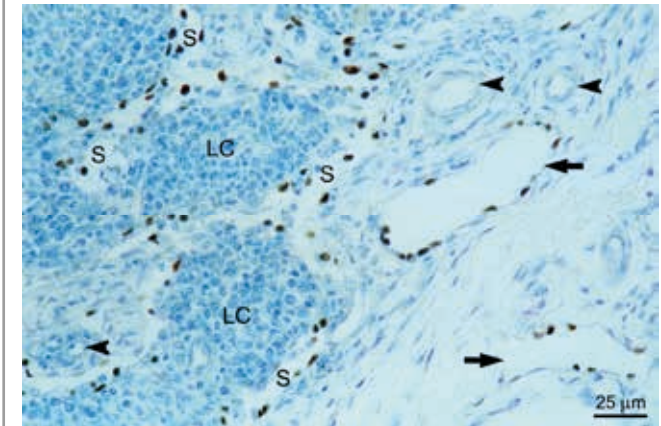


Immunofluorescence staining with frozen sections of mouse embryo tissue at day 13.5 with anti-CD31 (green) and polyclonal rabbit anti-human Prox-1 (red) [Cat# 102-PA32] shows a large lymphatic vessel (lv), blood vessels (arrows) and a sympathetic ganglion (sg) which is also positive for Prox-1.

The experiment was performed by the research group of Prof. Dr. J. Wilting, University Göttingen, Germany.

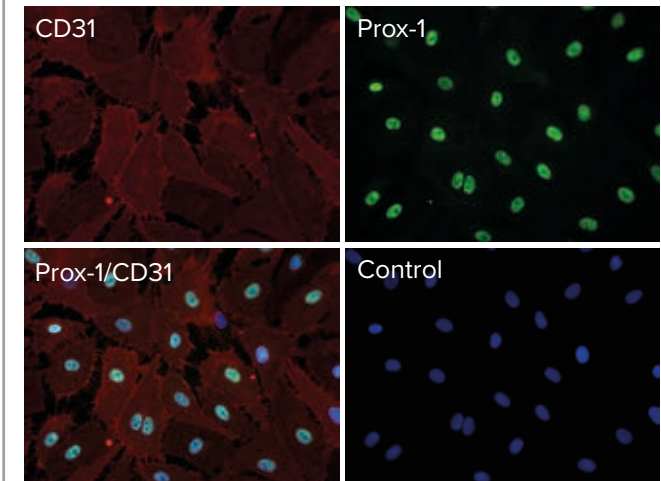
Prox-1

Rabbit anti-human Prox-1 [Cat# 102-PA32AG]



Equine mandibular lymph node, paraffin section, stained for Prox-1 using ReliaTech's polyclonal rabbit anti-human Prox-1 antibody, counterstained with toluidine blue. Sinusoids (S) as well as lymphatic vessels in the hilum of the lymph node (arrows) are lined by positively stained lymphatic endothelial cells. Blood vascular endothelium remains unstained (arrow heads). LC: Cluster of lymphocytes
Provided by C. Staszky, University of Veterinary Medicine Hannover, Germany.

Rabbit anti-human Prox-1 [Cat# 102-PA32AG]



Double Immunofluorescence staining of human Prox-1 (green) and CD31 (red) with HDLEC using ReliaTech's polyclonal rabbit anti-human Prox-1 antibody [Cat# 102-PA32AG] and a monoclonal mouse anti-human CD31 antibody [Cat# 101-M92]. Nuclei are counterstained with DAPI (blue).