

Growth Factors

Cytokines • Soluble Receptors

Monoclonal Antibodies

Polyclonal Antibodies

ELISA

Service Options:

- Production of recombinant proteins in E.coli and insect cells
- Purification of recombinant proteins and antibodies
- Reagent services: special formulation
- Bulk service
- Functional assays for growth factors and cytokines



Release 05/2020

orders@reliatech.de

ReliaTech reliably yours

We are ISO 9001:2015 certified.

Your Partner in Life Science Research of
Angiogenesis and Lymphangiogenesis

20 years of experience

Get in touch:

ReliaTech GmbH

Lindener Str. 15
38300 Wolfenbüttel
Germany

Phone: +49 (0) 5331 8586 987
Fax: +49 (0) 5331 8586 989
E-Mail: orders@reliatech.de

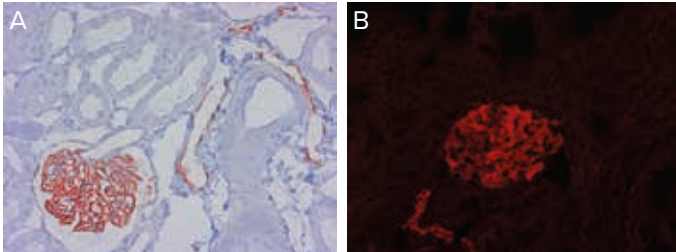


Lymphatic Endothelial
Cell Marker:
Podoplanin

www.reliatech.de

Lymphatic Endothelial

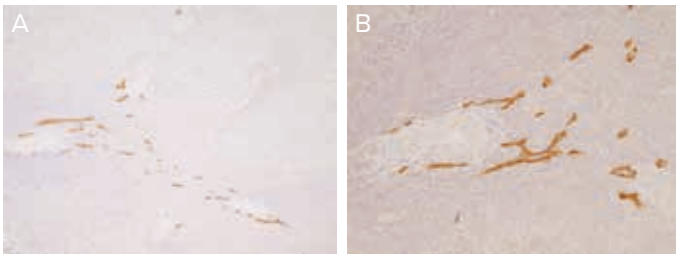
Mouse anti-rat Podoplanin [Cat# 104-M40]



Immunohistochemistry (A) and Immunofluorescence (B) staining of lymphatic endothelial cells and podocytes in normal rat renal corpuscle (PF-embedded sections fixed in formalin) using ReliaTech's monoclonal mouse anti-rat Podoplanin antibody [Cat# 104-M40, Clone #LF3(B7)D5B3].

The experiments were performed by the research group of Prof. Dr. Dontscho Kerjaschki, Clinical Institute of Pathology, Medical University Vienna.

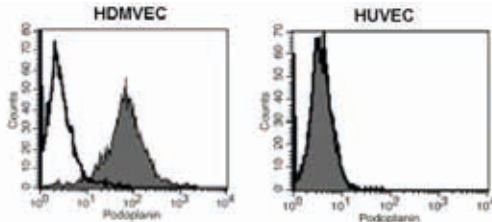
Mouse anti-human Podoplanin [Cat# 101-M40]



Immunohistochemistry on cryo sections of human spleen using ReliaTech's monoclonal mouse anti-human Podoplanin antibody [Cat# 101-M40, Clone #18H5]. (A) 10x, (B) 20x magnification. The antibody stains solely the lymphatic endothelial cells and not the sinus endothelium.

Experiment was performed by Prof. Dr. Birte Steiniger, Institute of Anatomy and Cell Biology, University Marburg, Germany.

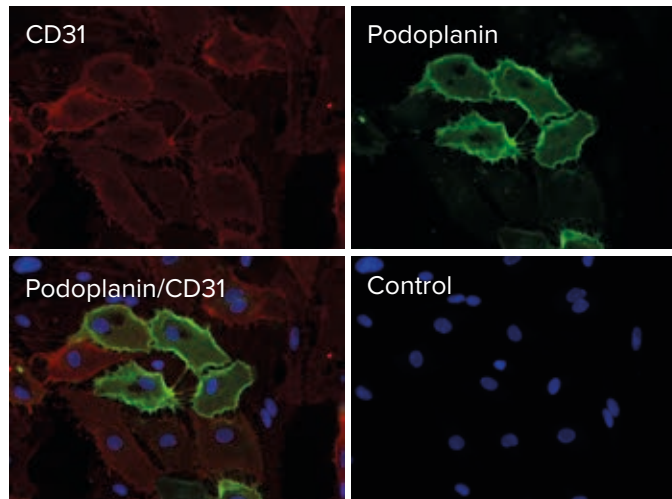
Mouse anti-human Podoplanin [Cat# 101-M40]



FACS analysis with primary human dermal microvascular (HDMVEC) and umbilical vein (HUVEC) endothelial cells using ReliaTech's monoclonal mouse anti-human Podoplanin antibody [Cat# 101-M40, Clone #18H5]. The lymphatic endothelial cell marker Podoplanin is not expressed in blood endothelial cells.

Cell Marker

Rabbit anti-human Podoplanin [Cat# 102-PA40AG]



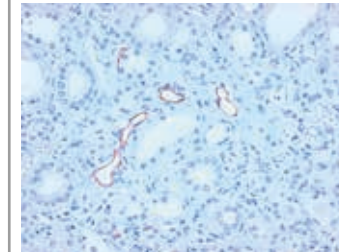
Double Immunofluorescence staining of human Podoplanin (green) and CD31 (red) in a co-culture of HDLEC, HUVEC and A431 cells using ReliaTech's polyclonal rabbit anti-human Podoplanin antibody [Cat# 102-PA40AG] and a monoclonal mouse anti-human CD31 antibody [Cat# 101-M92]. Nuclei are counterstained with DAPI (blue).

Anti-Podoplanin antibodies available from ReliaTech

Cat#	Host	Antibody	Application
101-M40	Mouse	monoclonal anti-human, clone #18H5 also biotinylated or labeled with FITC or PE	WB, IHC, IF, FC
101-M41	Mouse	monoclonal anti-human, clone #4D5aE5E6	IHC
102-PA40	Rabbit	polyclonal anti-human, Protein A purified	WB, IHC, IP
102-PA40AG	Rabbit	polyclonal anti-human, Antigen affinity purified	WB, IHC, IP
103-M40	Hamster	monoclonal anti-mouse, clone #RTD4E10 also biotinylated	WB, IHC, IP
103-PA40	Rabbit	polyclonal anti-mouse, Protein A purified	WB, IHC
104-M40	Mouse	monoclonal anti-rat, clone #LF3(B7)D5B3	WB, IHC

Podoplanin

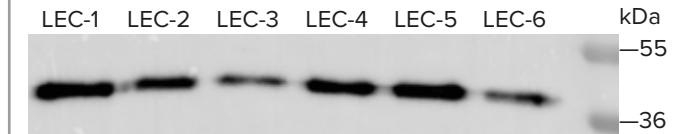
Mouse anti-human Podoplanin [Cat# 101-M41]



Immunohistochemistry staining of lymphatic endothelial cells in normal human kidney tissue (PF-embedded tissue-sections fixed in formalin) using ReliaTech's monoclonal mouse anti-human Podoplanin [Cat# 101-M41, Clone #4D5aE5E6] antibody. The antibody stains the lymphatic vessels.

The experiment was performed by the research group of Prof. Dr. Dontscho Kerjaschki, Clinical Institute of Pathology, Medical University Vienna.

Mouse anti-human Podoplanin [Cat# 101-M41]

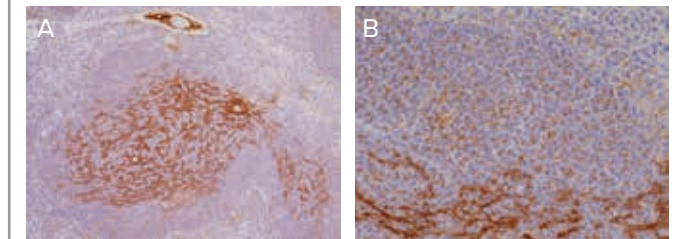


Western Blot analysis under non-reducing conditions with total lysate of different lymphatic endothelial cell lines (LEC) using ReliaTech's monoclonal mouse anti-human Podoplanin antibody [Cat# 101-M41, Clone #4D5aE5E6]. All LEC cell lines are positive for Podoplanin.

The experiment was performed by the research group of Prof. J. Wiltling, University Göttingen, Germany.

For more information visit us at www.reliatech.de.

Hamster anti-mouse Podoplanin [Cat# 103-M40]



Immunohistochemistry on cryo sections from mouse spleen tissue using ReliaTech's hamster anti-mouse Podoplanin antibody [Cat# 103-M40, Clone #RTD4E10]. (A) 20x, (B) 63x magnification. The antibody stains tremendously FRCs in the T cell zones of mouse spleen (C57BL/6) in addition to a weaker reticulate staining throughout the white spleen pulp (T and B cell regions) and some perivascular fibroblasts.

Experiments were performed by Prof. Dr. Birte Steiniger, Institute of Anatomy and Cell Biology, University Marburg, Germany.