

# ANTI-HUMAN EMILIN1

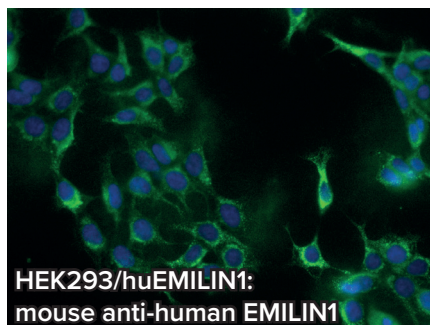
## PRODUCT SPECIFICATIONS

- Cat# 101-M09
- mouse monoclonal antibody
- clone #1H2/G8, IgG2a/kappa
- Protein G purified
- 100 µg, lyophilized



## APPLICATIONS

- Western Blot
- IF, IHC
- ELISA (capture antibody)
- IP



## ALSO AVAILABLE

- EMILIN1, rat anti-mouse, clone #C11A8 [Cat# 103-M80]
- EMILIN2, mouse anti-human, clone #828B3B3 [Cat# 101-M716]
- MMRN2, rat anti-mouse, clone #2063E2A11 [Cat# 103-M512]

## GET IN TOUCH:

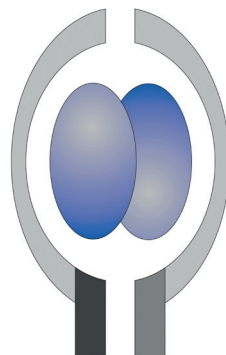
ReliaTech GmbH

Lindener Str. 15 • 38300 Wolfenbüttel • Germany

Phone: +49 (0) 5331 8586 987

Fax: +49 (0) 5331 8586 989

E-Mail: [orders@reliatech.de](mailto:orders@reliatech.de)

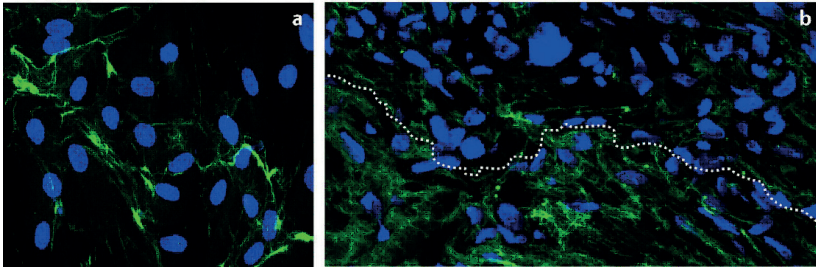


# ANTI-HUMAN EMILIN1

VISIT OUR WEBSITE FOR MORE INFORMATION

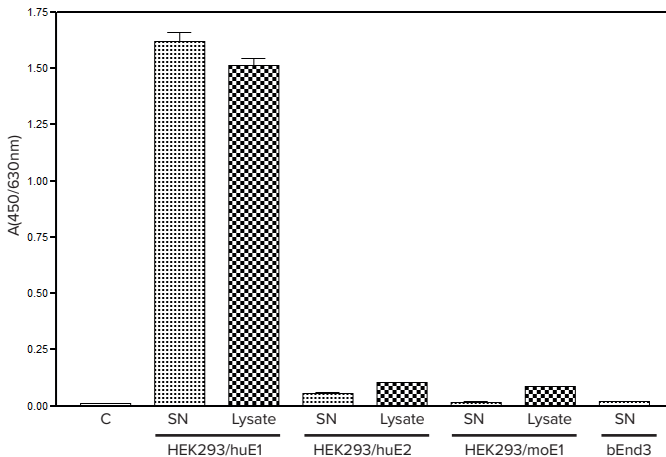


## IMMUNOFLUORESCENCE STAINING



Immunofluorescence staining of human EMILIN1 in normal cultured cells (skin human fibroblasts) (panel a, left) and in cryostat tissue section (undifferentiated soft tissue sarcoma) (panel b, right) with **#1H2/G8 [Cat# 101-M09]** (green staining). Nuclei are in blue. Dotted lines indicate the border between “normal” (lower corner) and “tumor” tissue.

## FUNCTIONAL ELISA



Supernatant (SN, 200 $\mu$ l) and total cell lysate (Lysate, 100 $\mu$ l, 1:2 diluted) of HEK293 cells expressing the different EMILIN proteins were coated to a 96-well plate and incubated at 37°C for >1 hour. After blocking and several wash steps the anti-human EMILIN1 **#1H2/G8 [Cat# 101-M09]** antibody was added (2 $\mu$ g/ml) and incubated for another 1 hour.

Detection was performed with an anti-mouse Biotin-conjugated secondary antibody. The monoclonal anti-human EMILIN1 antibody **#1H2/G8 [Cat# 101-M09]** shows no cross reaction with human EMILIN2 and mouse EMILIN1 in a functional ELISA.