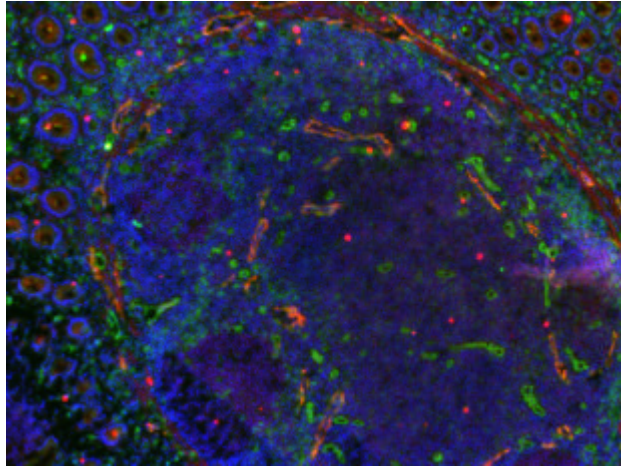


CD31/LYVE-1

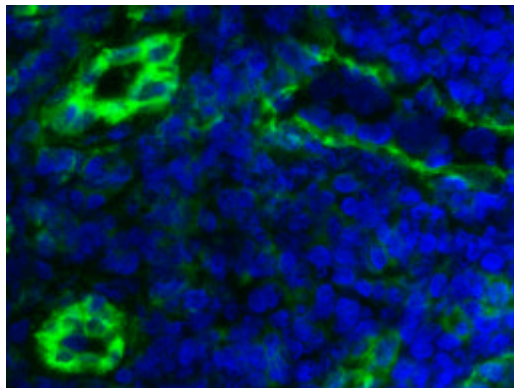


Colon carcinoma

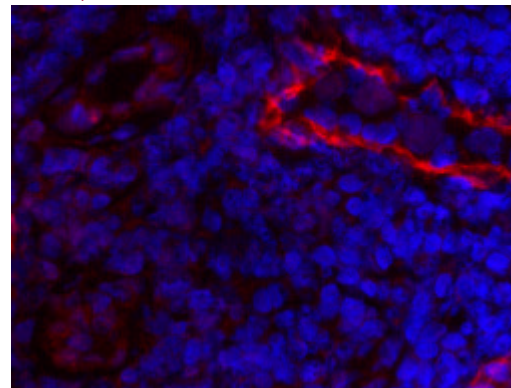
LYVE-1, a marker for lymphatics!

The staining was performed on cryosections from human colon carcinoma using RELIA Tech's polyclonal anti-human LYVE-1 antibody (Protein-A purified; 10 μ g/ml).

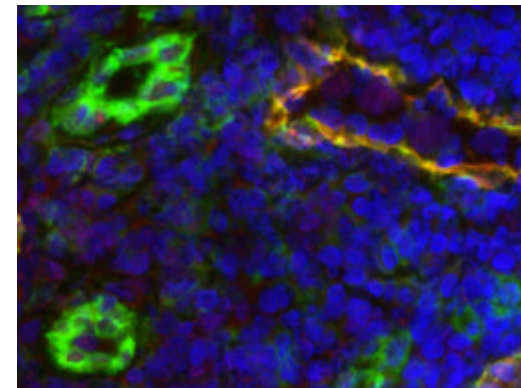
CD31



LYVE-1



CD31/LYVE-1



The experiments were performed by Dr. Ulrike Fiedler and Stefanie Koidel, Dept. of Vascular Biology and Angiogenesis Research Tumor Biology Center, Breisacher Str. 117, D-79106 Freiburg, Germany